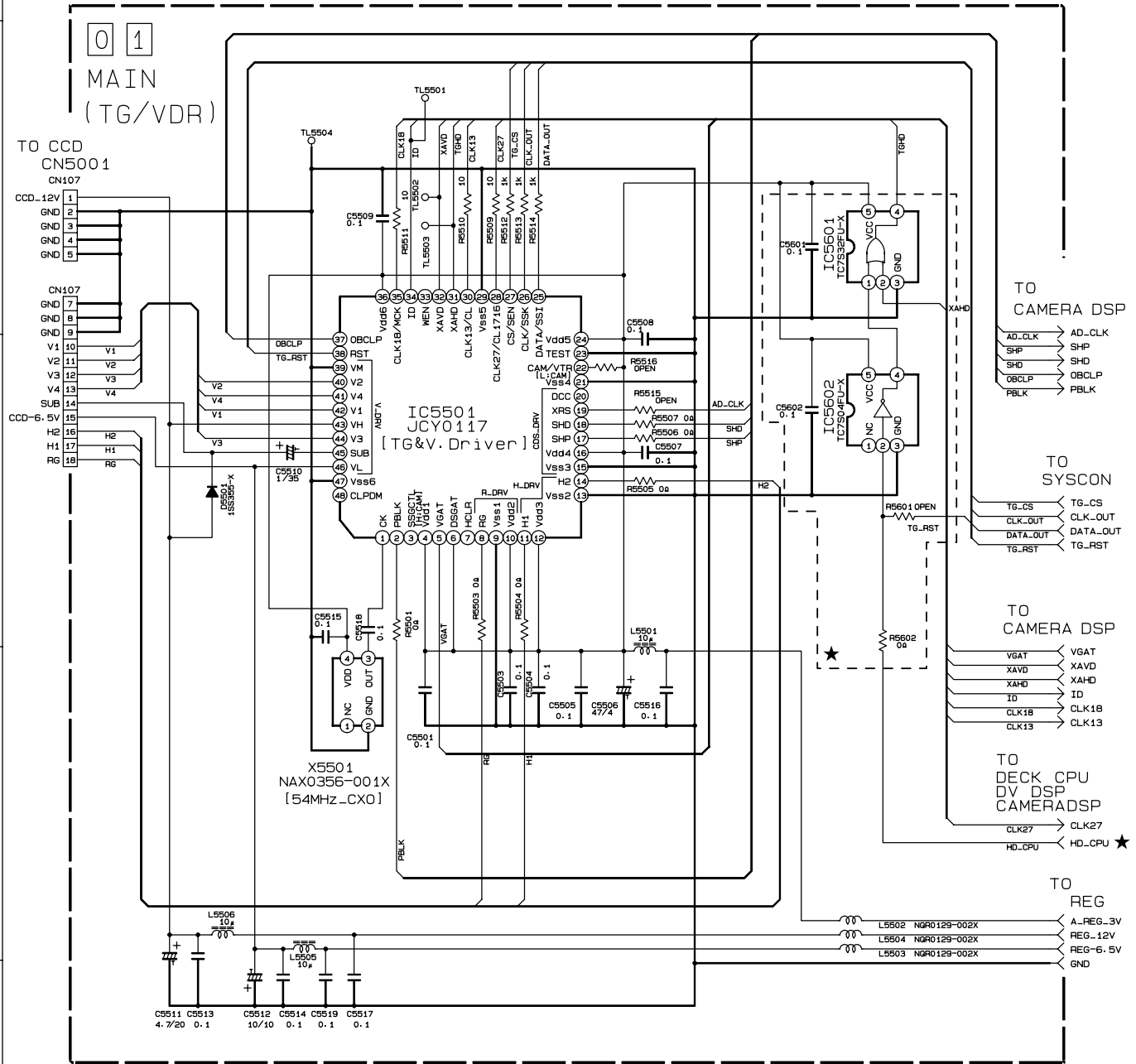


SECTION 4 CHARTS AND DIAGRAMS

4.1 TG/VDR SCHEMATIC DIAGRAM

Note 1: How to find the page showing the continuative schematic diagram.
Example) TO SYSCON (Page 4-5): Refer to the GR-DVL300U service manual (No. 86551).
TO TG/VDR (Page 4-1): Refer to this service manual.
2: The mark ★ means modified points.



A B C D

4.2 BOARD INTERCONNECTIONS

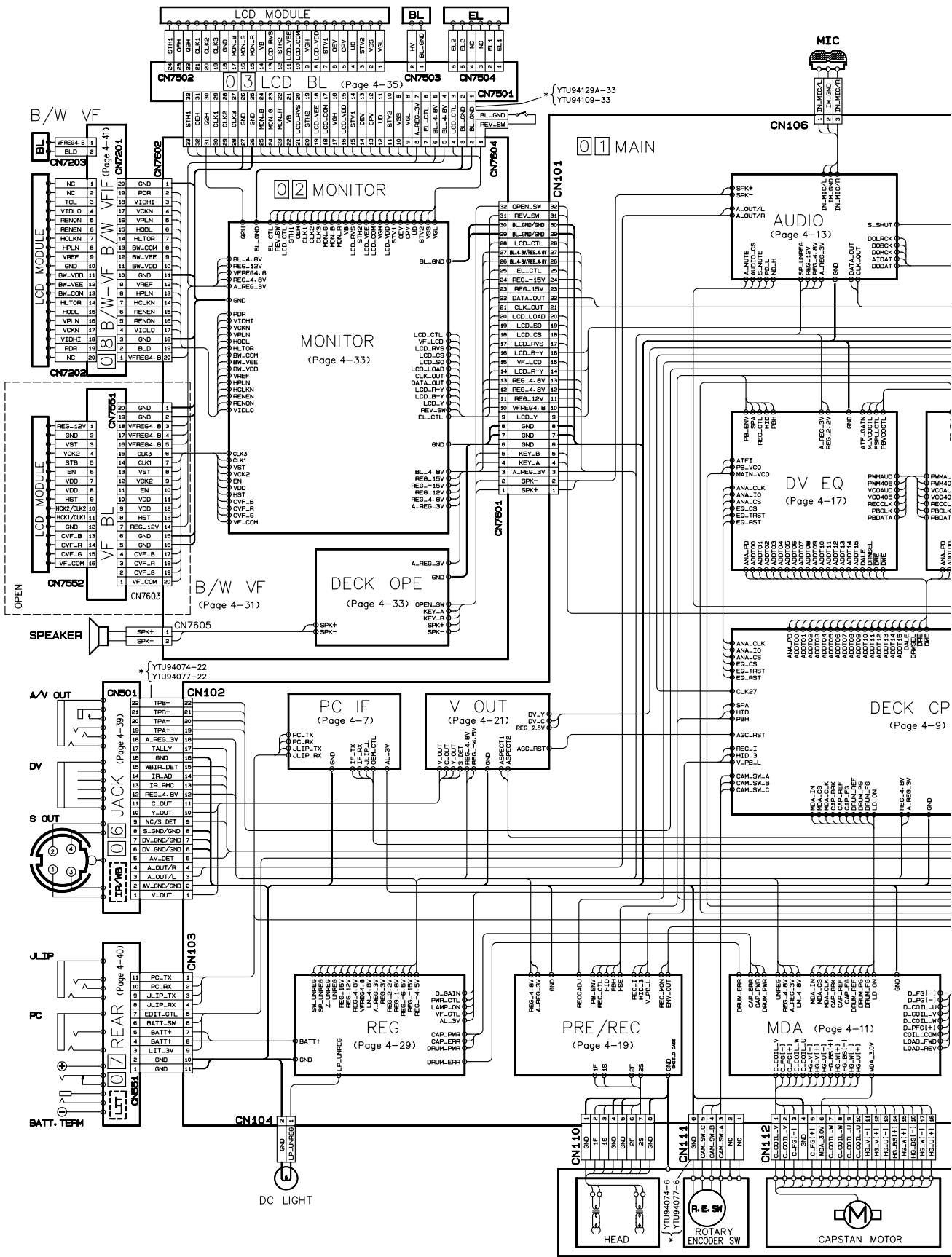
5

4

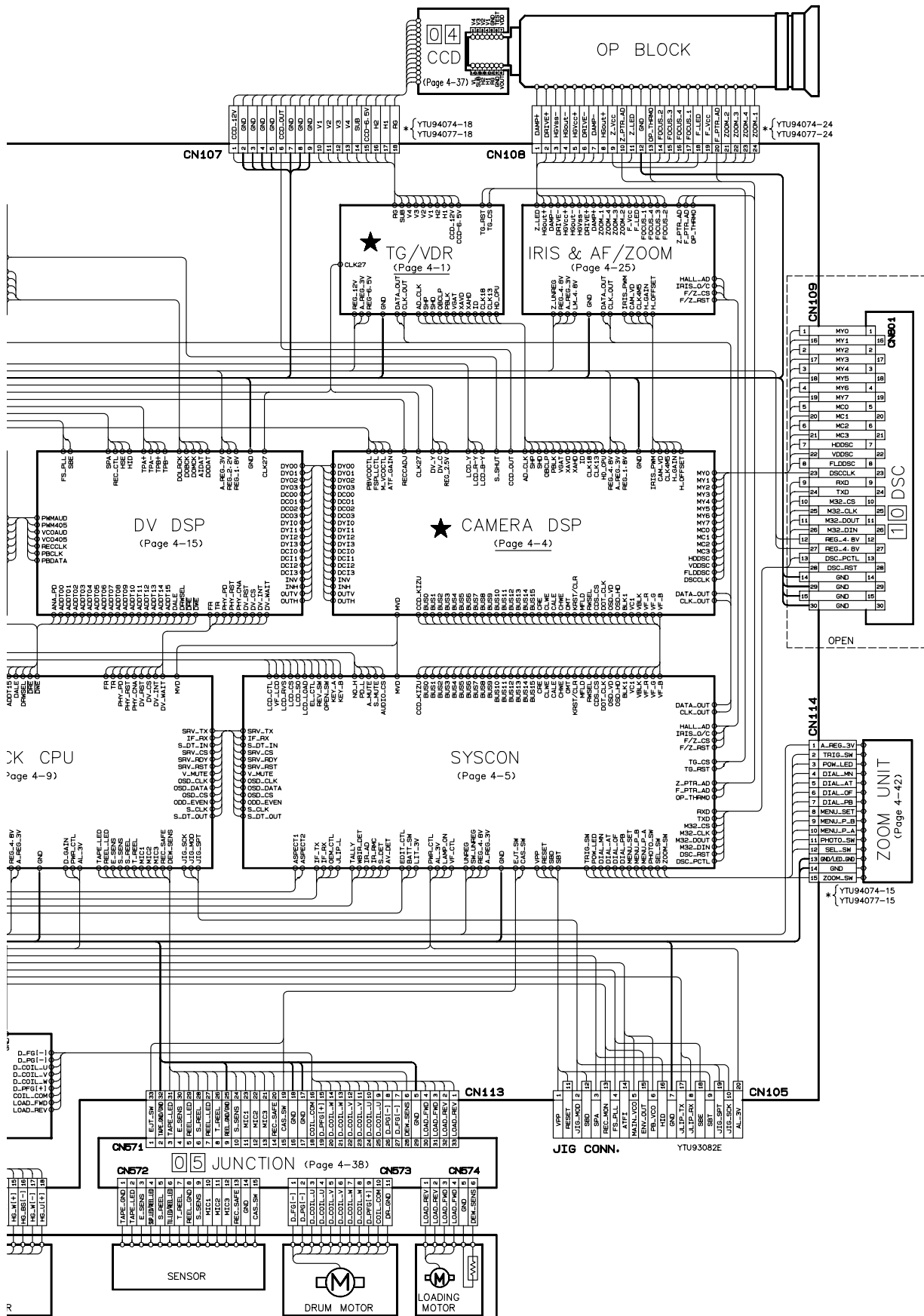
3

2

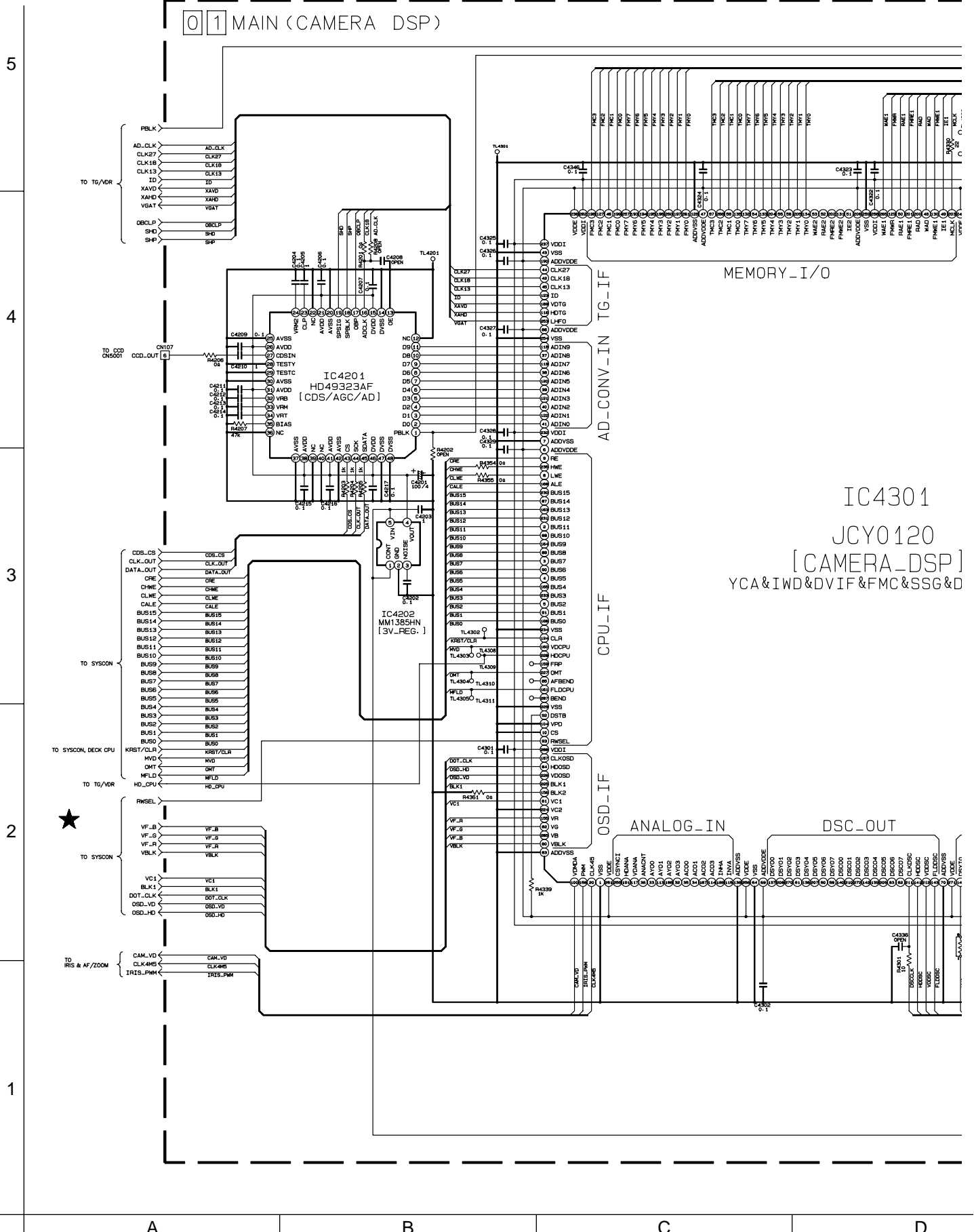
1

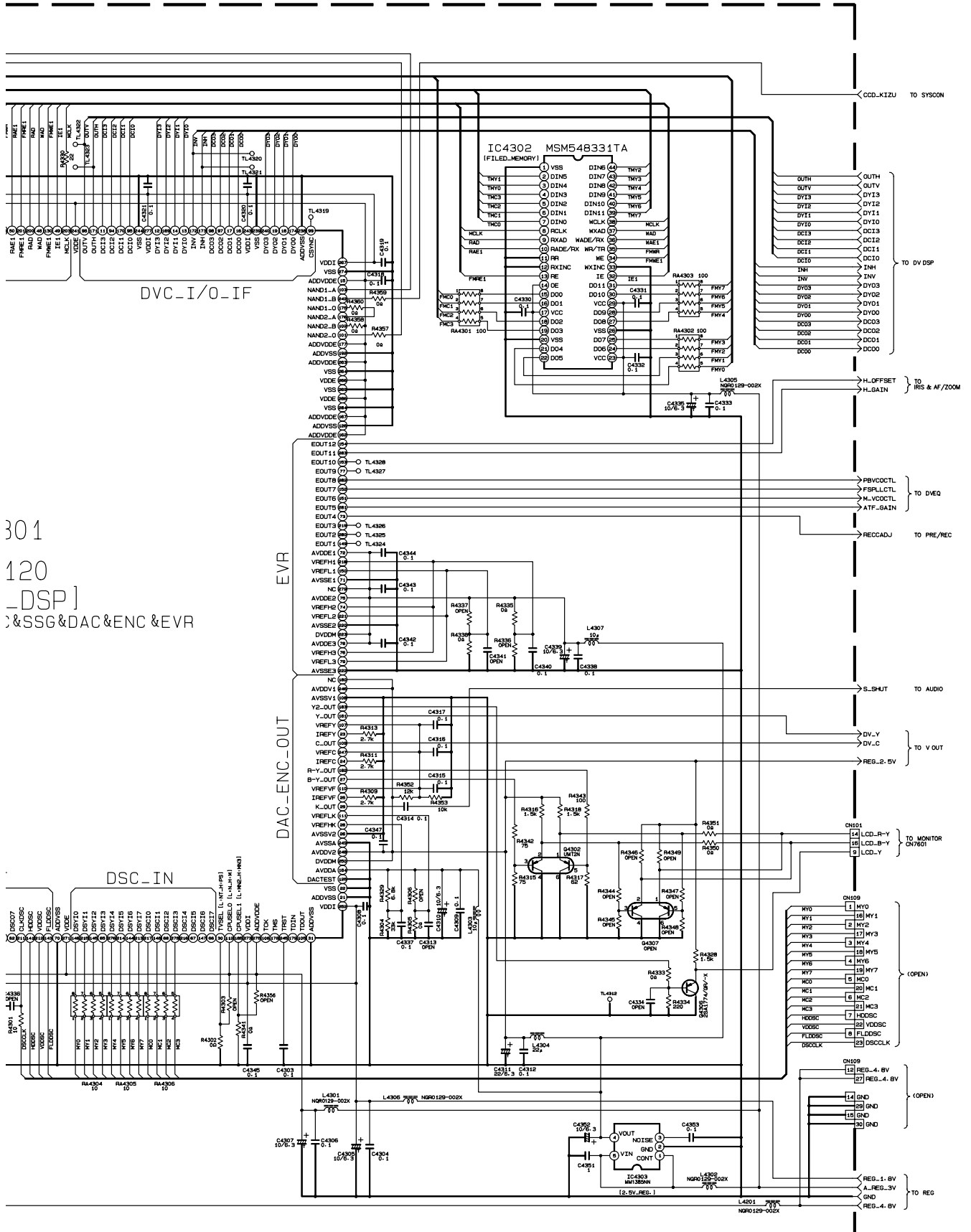


A B C D



4.3 CAMERA DSP SCHEMATIC DIAGRAM





301
120
_DSP]
&SSG&DAC&ENC &EVR

DVC-I/O-IF

EVR

DAC_ENC_OUT

DSC_IN

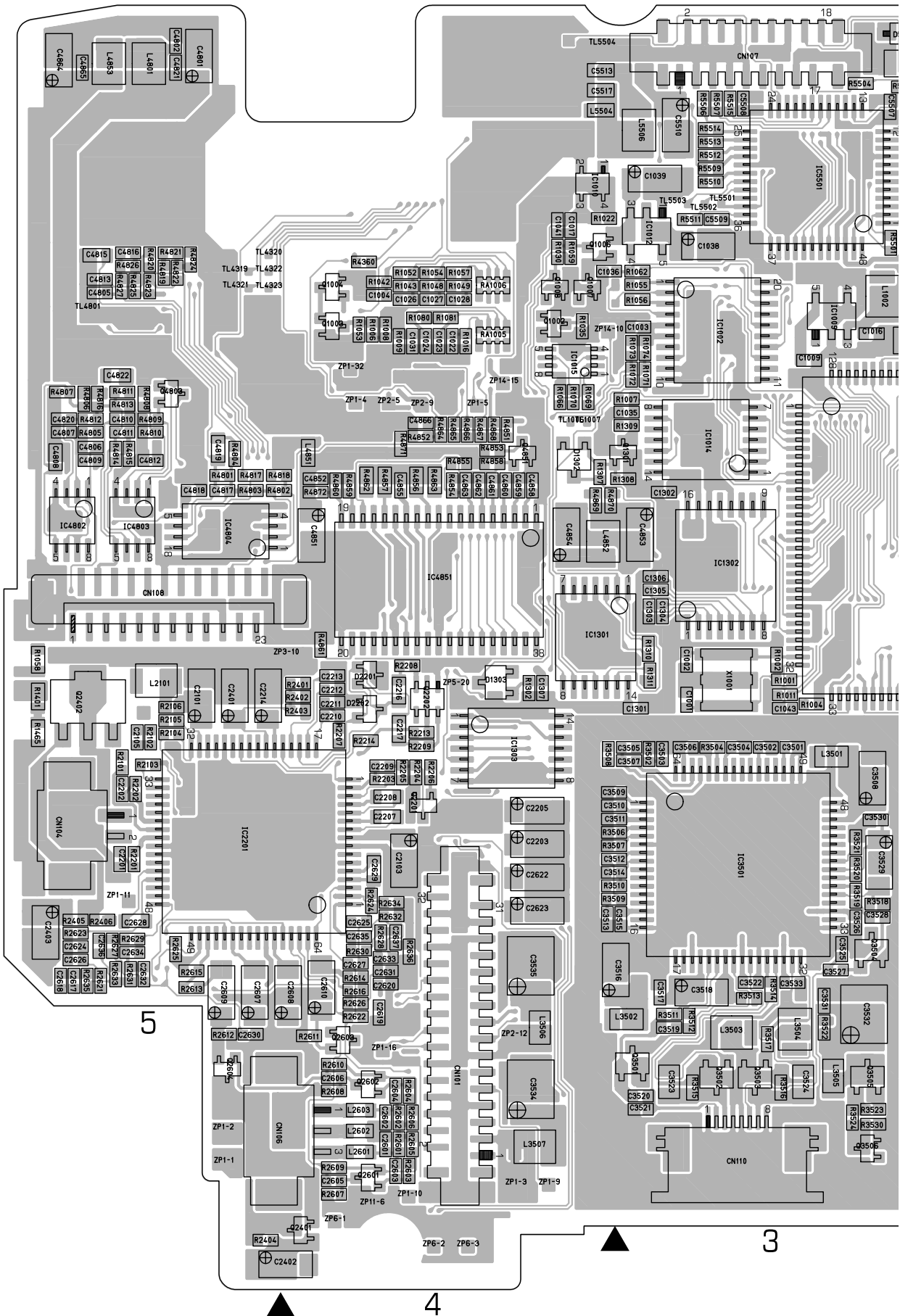
E

F

G

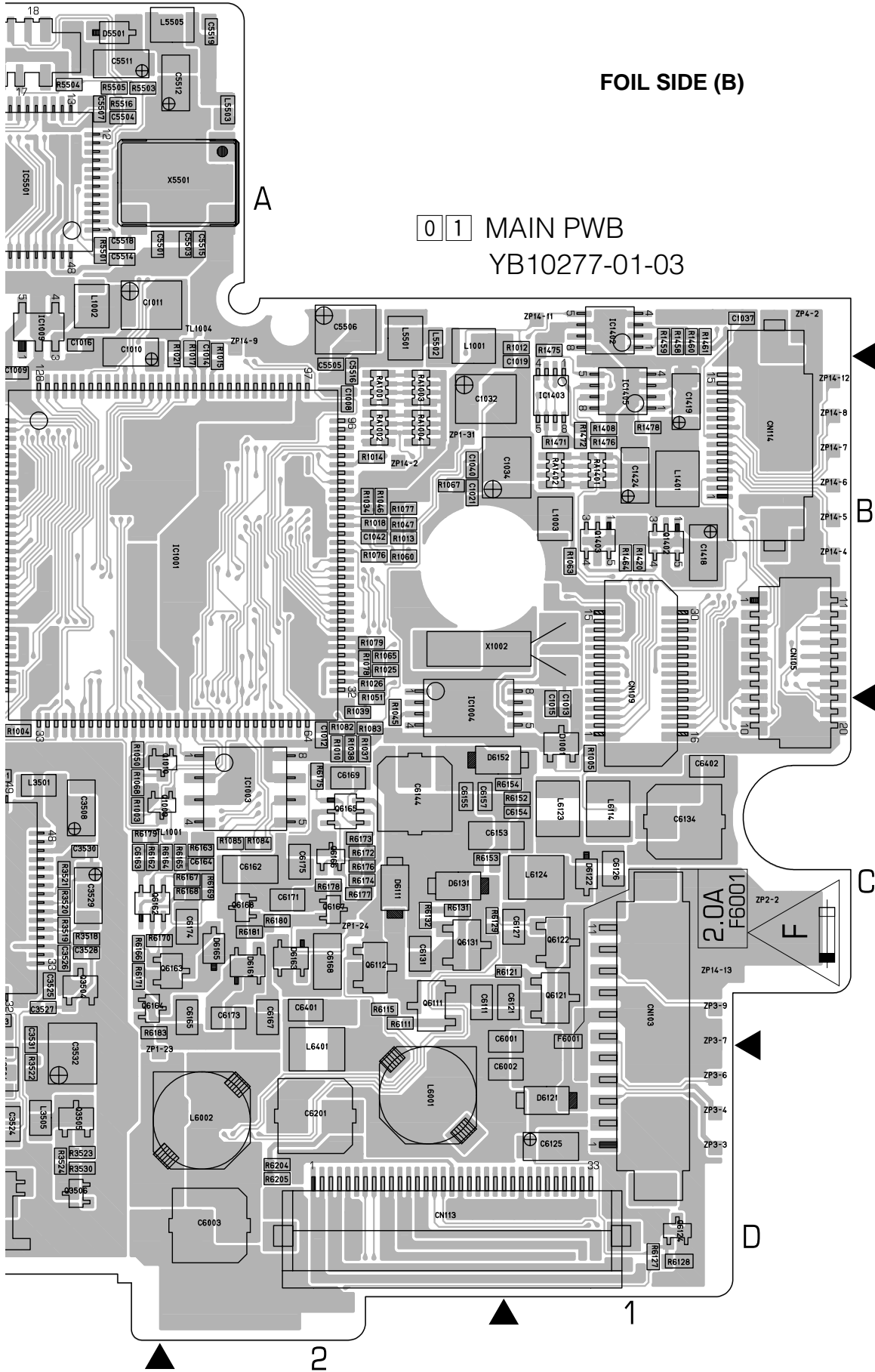
H

4.4 MAIN CIRCUIT BOARD



FOIL SIDE (B)

0 1 MAIN PWB
YB10277-01-03

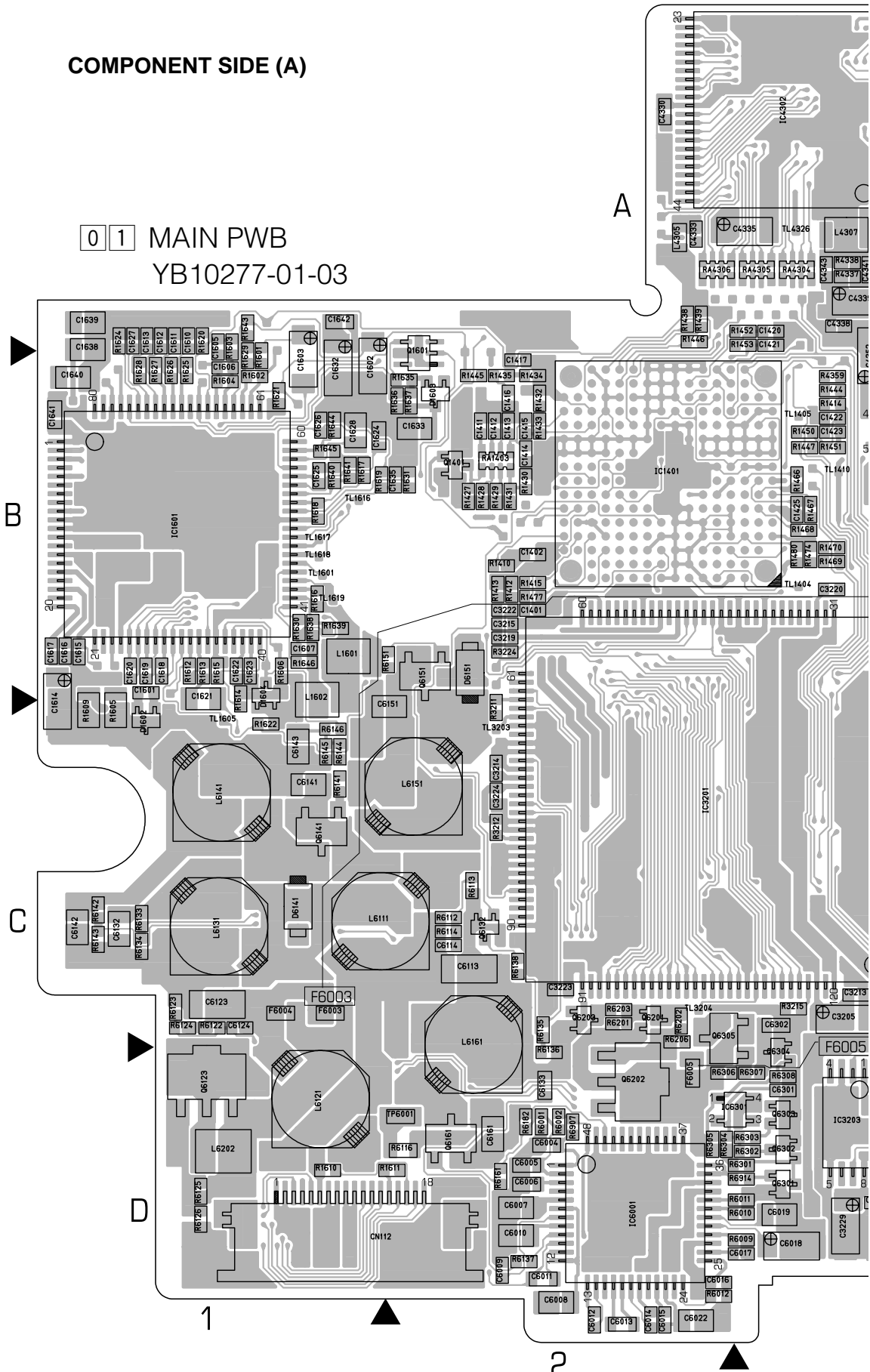


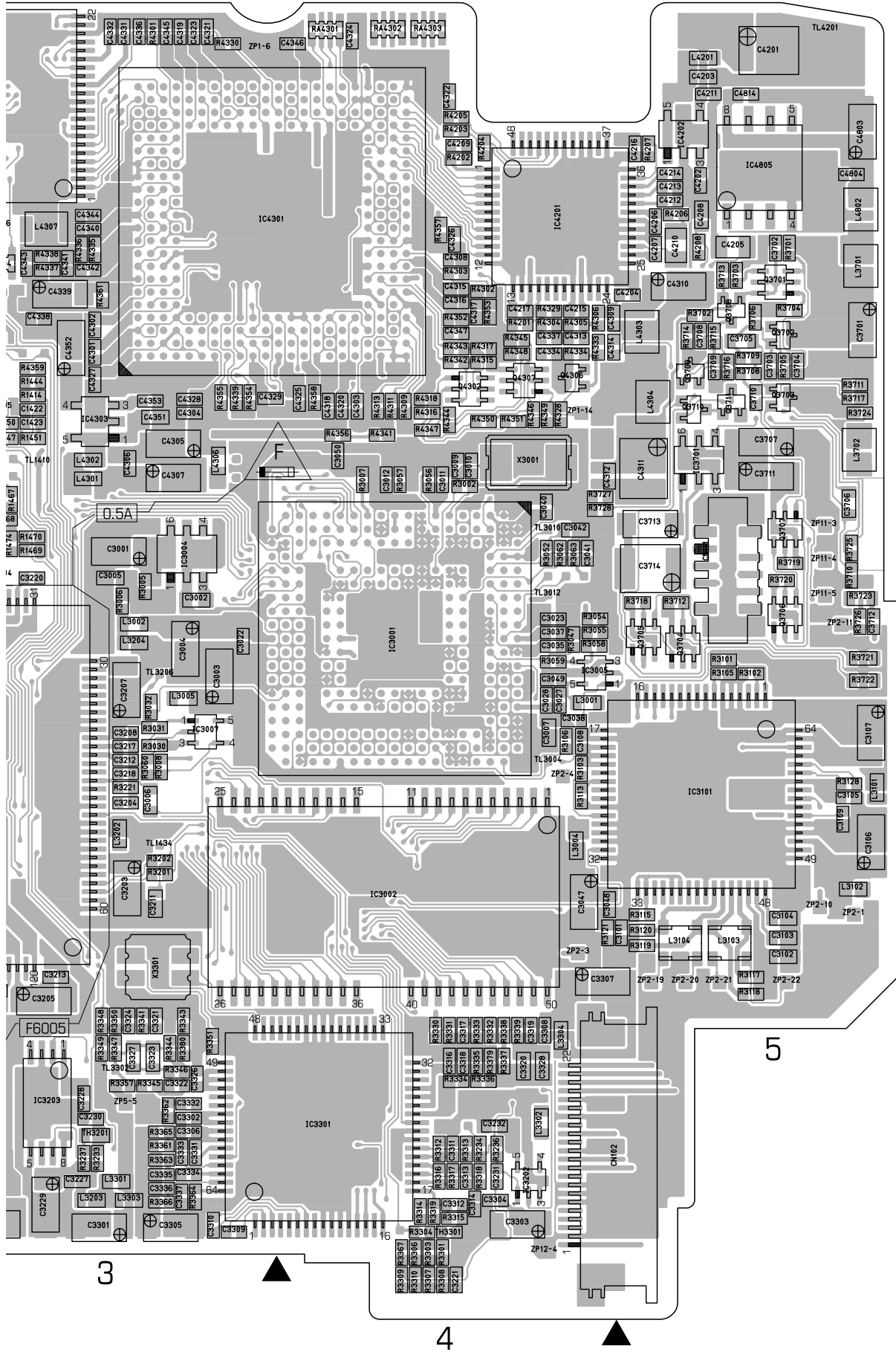
COMPONENT PARTS LOCATION GUIDE (MAIN)

REF.No.	LOCATION	REF.No.	LOCATION	REF.No.	LOCATION	REF.No.	LOCATION	REF.No.	LOCATION	REF.No.	LOCATION
CAPACITOR											
C1001	B	C2606	B	C3502	B	C4803	A	CN105	B	L4301	A
C1002	B	C2607	B	C3503	B	C4804	A	CN106	B	L4302	A
C1003	B	C2608	B	C3504	B	C4805	A	CN107	B	L4303	A
C1004	B	C2609	B	C3505	B	C4806	B	CN108	B	L4304	A
C1008	B	C2610	B	C3506	B	C4807	B	CN109	B	L4305	A
C1009	B	C2611	B	C3507	B	C4808	B	CN110	B	L4306	A
C1010	B	C2618	B	C3508	B	C4809	B	CN111	B	L4307	A
C1011	B	C2619	B	C3509	B	C4810	B	CN112	A	L4308	A
C1012	B	C2620	B	C3510	B	C4811	B	CN113	B	L4309	A
C1013	B	C2622	B	C3511	B	C4812	B	CN114	B	L4310	A
C1014	B	C2623	B	C3512	B	C4813	B			L4851	A
C1015	B	C2624	B	C3513	B	C4814	A			L4852	B
C1016	B	C2625	B	C3514	B	C4815	B	DIODE			
C1017	B	C2626	B	C3515	B	C4816	B	D1001	B	L4853	B
C1018	B	C2627	B	C3516	B	C4817	B	D1302	B	L5501	B
C1019	B	C2628	B	C3517	B	C4818	B	D1602	B	L5502	B
C1021	B	C2629	B	C3518	B	C4819	B	D1603	B	L5503	B
C1022	B	C2630	B	C3519	B	C4820	B	D2201	B	L5504	B
C1023	B	C2631	B	C3520	B	C4821	B	D2202	B	L5505	B
C1024	B	C2632	B	C3521	B	C4822	B	D5501	B	L6001	B
C1026	B	C2633	B	C3522	B	C4823	B	D6111	B	L6002	B
C1027	B	C2634	B	C3523	B	C4824	B	D6121	B	L6111	A
C1028	B	C2635	B	C3524	B	C4825	B	D6122	B	L6121	A
C1031	B	C2636	B	C3525	B	C4826	B	D6131	B	L6123	A
C1032	B	C2637	B	C3526	B	C4827	B	D6141	A	L6124	B
C1034	B	C3001	A	C3527	B	C4828	B	D6151	A	L6131	A
C1035	B	C3002	A	C3528	B	C4829	B	D6152	A	L6141	A
C1036	B	C3003	A	C3529	B	C4830	B	D6161	B	L6151	A
C1037	B	C3004	A	C3530	B	C4831	B	D6163	B	L6161	A
C1038	B	C3005	A	C3531	B	C4832	B	D6165	B	L6202	A
C1039	B	C3006	A	C3532	B	C4833	B	F6001	B	L6401	B
C1040	B	C3007	A	C3533	B	C4834	B	F6003	A		
C1041	B	C3009	A	C3534	B	C4835	B	F6004	A	TRANSISTOR	
C1042	B	C3010	A	C3535	B	C4836	B	F6005	A	Q1002	B
C1043	B	C3011	A	C3701	A	C5501	B			Q1003	B
C1043	B	C3012	A	C3702	A	C5502	B			Q1004	B
C1301	B	C3013	A	C3703	A	C5503	B			Q1006	B
C1302	B	C3022	A	C3704	A	C5504	B			Q1007	B
C1303	B	C3023	A	C3705	A	C5505	B			Q1008	B
C1304	B	C3027	A	C3706	A	C5506	B			Q1009	B
C1305	B	C3028	A	C3707	A	C5507	B			Q1010	B
C1306	B	C3035	A	C3708	A	C5508	B			Q1301	B
C1307	B	C3037	A	C3709	A	C5509	B			Q1401	A
C1401	A	C3038	A	C3710	A	C5510	B			Q1010	B
C1402	A	C3040	A	C3711	A	C5511	B			Q1402	B
C1411	A	C3041	A	C3712	A	C5512	B			Q1403	B
C1412	A	C3042	A	C3713	A	C5513	B			Q1601	A
C1413	A	C3047	A	C3714	A	C5514	B			Q2201	B
C1414	A	C3048	A	C4201	A	C5515	B			Q2202	B
C1415	A	C3049	A	C4202	A	C5516	B			Q2401	B
C1416	A	C3050	A	C4203	A	C5517	B			Q2402	B
C1417	A	C3101	A	C4204	A	C5518	B			Q2601	B
C1418	B	C3102	A	C4205	A	C5519	B			Q2602	B
C1419	B	C3103	A	C4206	A	C6001	B			Q2603	B
C1420	A	C3104	A	C4207	A	C6002	B			Q2604	B
C1421	A	C3105	A	C4208	A	C6003	B			Q3501	B
C1422	A	C3106	A	C4209	A	C6004	B			Q3502	B
C1423	A	C3107	A	C4210	A	C6005	B			Q3503	B
C1424	B	C3108	A	C4211	A	C6006	B			Q3504	B
C1425	A	C3109	A	C4212	A	C6007	B			Q3505	B
C1601	A	C3203	A	C4213	A	C6008	B			Q3506	B
C1602	A	C3204	A	C4214	A	C6009	B			Q3701	A
C1603	A	C3205	A	C4215	A	C6010	B			Q3702	A
C1605	A	C3207	A	C4216	A	C6011	B			Q3703	A
C1606	A	C3208	A	C4217	A	C6012	B			Q3704	A
C1607	A	C3211	A	C4301	A	C6013	B			Q3705	A
C1610	A	C3212	A	C4302	A	C6014	B			Q3706	A
C1611	A	C3213	A	C4303	A	C6015	B			Q3707	A
C1612	A	C3214	A	C4304	A	C6016	B			Q3708	A
C1613	A	C3215	A	C4305	A	C6017	B			Q3709	A
C1614	A	C3217	A	C4306	A	C6018	B			Q3710	A
C1615	A	C3218	A	C4307	A	C6019	B			Q3711	A
C1616	A	C3219	A	C4308	A	C6022	B			Q4302	A
C1617	A	C3220	A	C4309	A	C6111	B			Q4306	A
C1618	A	C3221	A	C4310	A	C6113	B			Q4307	A
C1619	A	C3222	A	C4311	A	C6114	B			Q4803	B
C1620	A	C3223	A	C4312	A	C6121	B			Q4851	B
C1621	A	C3224	A	C4313	A	C6123	B			Q6111	B
C1622	A	C3227	A	C4314	A	C6124	B			Q6112	B
C1623	A	C3228	A	C4315	A	C6125	B			Q6121	B
C1624	A	C3229	A	C4316	A	C6126	B			Q6122	B
C1625	A	C3230	A	C4317	A	C6127	B			Q6123	B
C1626	A	C3231	A	C4318	A	C6131	B			Q6124	A
C1627	A	C3301	A	C4319	A	C6132	B			Q6131	B
C1628	A	C3302	A	C4320	A	C6133	B			Q6132	B
C1632	A	C3303	A	C4321	A	C6134	B			Q6141	A
C1633	A	C3304	A	C4322	A	C6141	A			Q6151	A
C1635	A	C3305	A	C4323	A	C6142	A			Q6161	A
C1638	A	C3306	A	C4324	A	C6143	A			Q6162	B
C1639	A	C3307	A	C4325	A	C6144	B			Q6163	B
C1640	A	C3308	A	C4326	A	C6151	B			Q6164	B
C1641	A	C3309	A	C4327	A	C6153	B			Q6165	B
C1642	A	C3310	A	C4328	A	C6154	B			Q6166	B
C2101	B	C3311	A	C4329	A	C6155	B			Q6167	B
C2103	B	C3312	A	C4330	A	C6156	B			Q6168	B
C2105	B	C3313	A	C4331	A	C6161	A			Q6201	A
C2201	B	C3314	A	C4332	A	C6162	A			Q6202	A
C2202	B	C3315	A	C4333	A	C6163	A			Q6203	A
C2203	B	C3316	A	C4334	A	C6164	B			Q6301	A
C2205	B	C3317	A	C4335	A	C6165	B			Q6302	A
C2207	B	C3318	A	C4336	A	C6167	B			Q6303	A
C2208	B	C3319	A	C4337	A	C6168	B			Q6304	A
C2209	B	C3320	A	C4338	A	C6169	B			Q6305	A
C2210	B	C3321	A	C4339	A	C6171	B				
C2211	B	C3322	A	C4340	A	C6173	B			RESISTOR	
C2212	B	C3323	A	C4341	A	C6175	B			R1001	B
C2213	B	C3324	A	C4342	A	C6201	B			R1002	B
C2214	B	C3325	A	C4343	A	C6202	B			R1003	B
C2216	B	C3327	A	C4344	A	C6301	A			R1004	B
C2217	B	C3328	A	C4345	A	C6302	A			R1005	B
C2401	B	C3331	A	C4346	A	C6401	B			R1006	B
C2402	B	C3332	A	C4347	A	C6402	B			R1007	B
C2403	B	C3333	A	C4351	A					R1008	B
C2601	B	C3334	A	C4352	A					R1009	B
C2602	B	C3335	A	C4353	A					R1010	B
C2603	B	C3336	A	C4801	B					R1011	B
C2604	B	C3337	A	C4802	B					R1012	B
C2605	B	C3501	B							R1013	B

COMPONENT SIDE (A)

0 1 MAIN PWB
YB10277-01-03





3

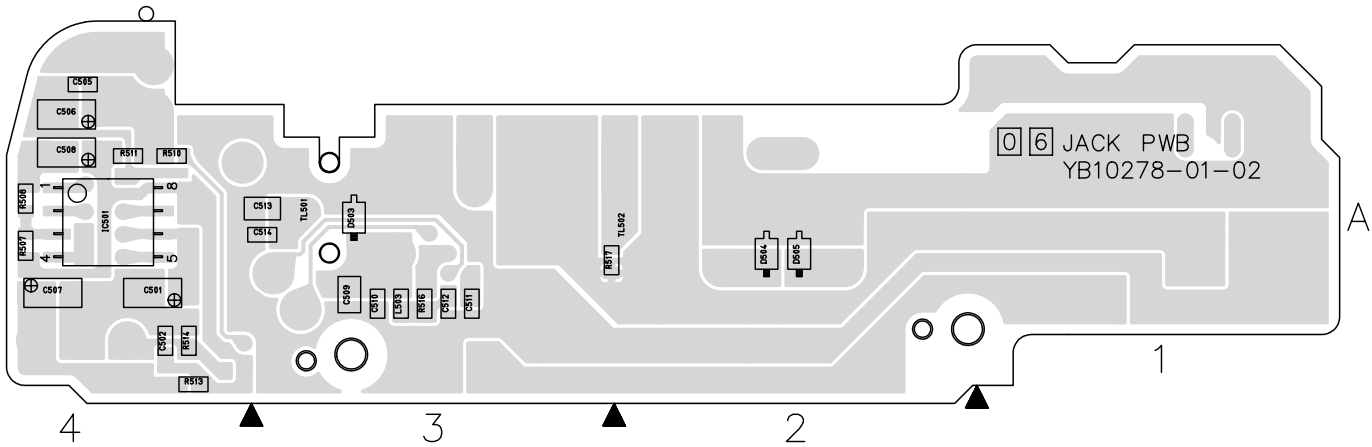
4

5

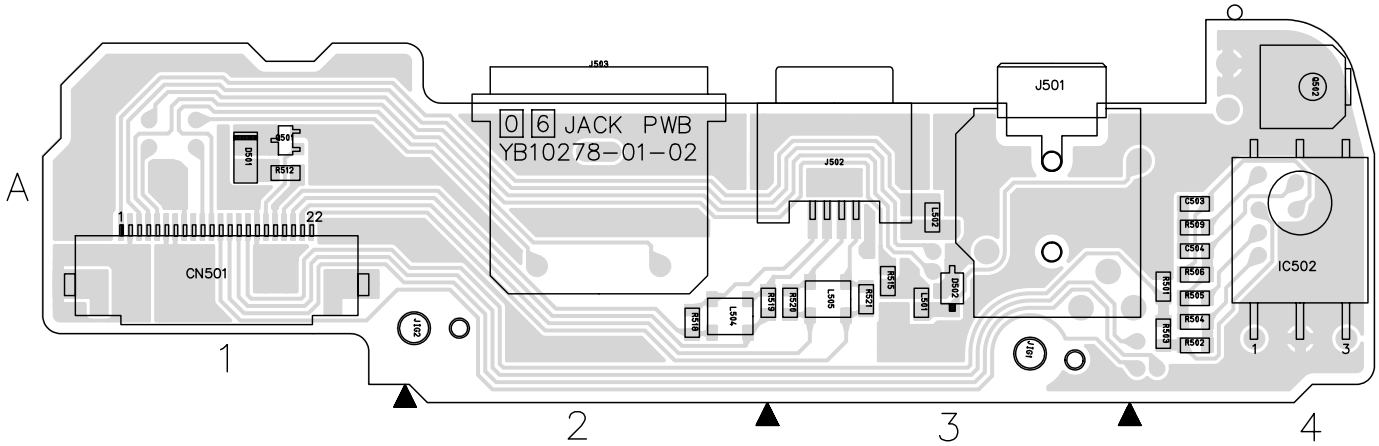
4.5 JACK, REAR AND JUNCTION CIRCUIT BOARDS

– JACK –

FOIL SIDE (B)



COMPONENT SIDE (A)

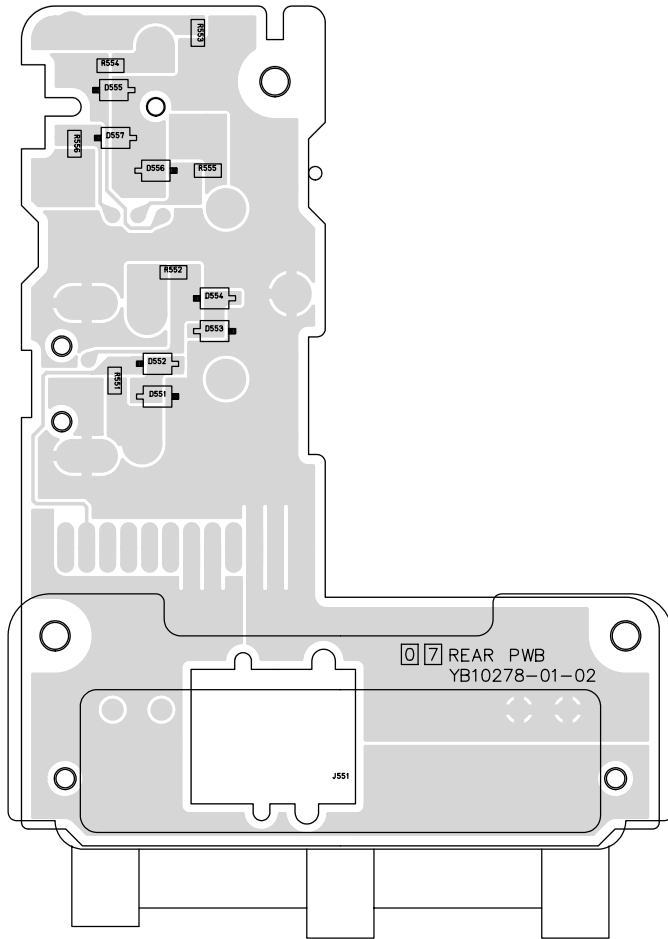


COMPONENT PARTS LOCATION GUIDE (JACK)

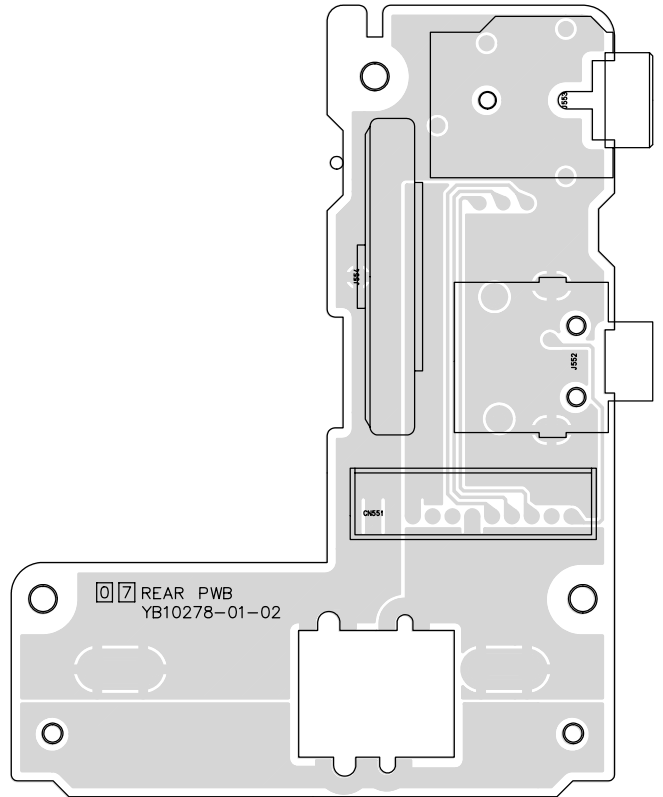
REF.No.	LOCATION	REF.No.	LOCATION	REF.No.	LOCATION	REF.No.	LOCATION	REF.No.	LOCATION		
CAPACITOR		CONNECTOR		COIL		R504	A C 4A	R519	A C 3A		
C501	B C 4A	CN501	A C 1A	L501	A C 3A	R505	A C 4A	R520	A C 3A		
C502	B C 4A	DIODE		L502	A C 3A	R506	A C 4A	R521	A C 3A		
C503	A C 4A			L503	B C 3A	R507	B C 4A	OTHER			
C504	A C 4A			D501	A C 1A	L504	A C 2A	R508	B C 4A	J501	A D 3A
C505	B C 4A			D502	A C 3A	L505	A C 3A	R509	A C 4A	J502	A C 3A
C506	B C 4A			D503	B C 3A	TRANSISTOR		R510	B C 4A	J503	A D 2A
C507	B C 4A	D504	B C 2A	Q501	A C 1A	R511	B C 4A	TL501	B C 3A		
C508	B C 4A	D505	B C 2A	Q502	A D 4A	R512	A C 1A	TL502	B C 2A		
C509	B C 3A	IC		RESISTOR		R513	B C 4A				
C510	B C 3A	IC501	B C 4A	R501	A C 4A	R514	B C 4A				
C511	B C 3A	IC502	A D 4A	R502	A C 4A	R515	A C 3A				
C512	B C 3A			R503	A C 4A	R516	B C 3A				
C513	B C 3A					R517	B C 3A				
C514	B C 3A					R518	A C 2A				

- REAR -

FOIL SIDE (B)

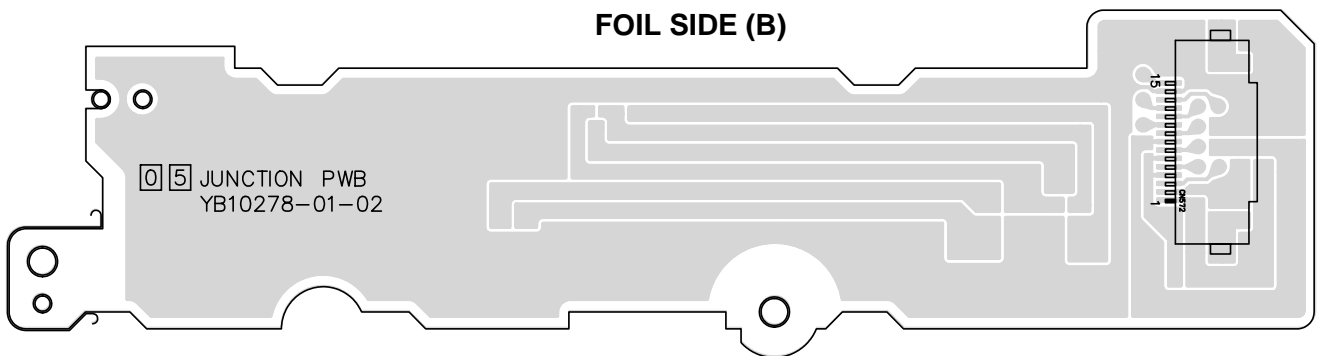


COMPONENT SIDE (A)



- JUNCTION -

FOIL SIDE (B)



COMPONENT SIDE (A)

